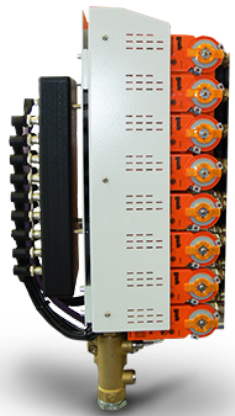




system integrat

integrat direct

Modular flow control
with water up to 120°C



The multiple water quantity control system in modular design that is available in several versions fulfills not less than three requirements at the same time. In one system, it combines the advantages of the conventional water distributors, the impulse cooling systems and the continuously operating temperature control units while eliminating the disadvantages of each of these systems. The temperature control system disposes of up to 128 individually adjustable circuits and is suitable for the processing of polyolefins and technical thermoplastic materials.

In case of the basic execution (**itd B**) the requested flow rate is adjusted manually, just like at the conventional water distributor, but is then monitored by a flow meter and presented digitally and graphically on the central display of the control unit.

In the standard execution (**itd R**) the water quantity is individually set for each circuit at the central operating unit and - if necessary - is readjusted automatically via a water quantity regulation valve within adjustable limit values.

Depending on the execution flow rates between 1,8 and 32 l/min at water temperatures up to 95°C respectively 120°C can be regulated. The top-up of temperature controlled water with the supply temperatures demanded by the process is realized by upstream units of the gwk **teco** series.

